

”Behind the mirror”

Technical Rider

Attached is a technical Rider covering schedule, technical and practical requirements, and contacts. Changes may occur.

Contact information:

Managing director:

Pia Holden

Telephone number: + 47 920 98 897

Email: pia@pantareidanseteater.com

Schedule:

- Get in: minimum 8 hours before performance
- Set-up time: 6 hours
- Rehearsals: 2 hours before performance
- Estimated time for load out: 2 hours

Performance length: 30 min

The schedule will change for smaller venues when lighting and sound is brought with the company on tour: This includes school tours and rural touring in village halls:

- Get in: minimum 4 hours before performance
- Set-up time: 3 hours
- Rehearsals: 1 hours before performance
- Estimated time for load out: 1 hours

Performance length: 30 min

Arrival

- On arrival we require a clean stage and technical seating. Pipes/grid must be stripped and ready for rig. Temperature on stage must be minimum 22 degrees Celsius at all time. Load in and parking area must be cleared. The company needs 1 parking space close to the venue.

Staff

- On arrival we require 1 sound technician and 1 light technician. Both technicians must assist company at load in and load out, have good knowledge of the technical infrastructure and be available at all times for rigging and during performance. If prerig is possible please contact the company.

Audience seating

The ideal setting is to perform within a scenography structure surrounding the performance area. The company can also perform with the audience in a proscenium arch theatre.

Stage measurements

- The required performance area is 6m x 7m with side stage on each side of minimum 1m.
- Minimum proscenium/stage height is 5m.
- If stage has walls or objects with light colors or windows with transparent curtains, please cover with black molton/textile.

Set design

As part of the set design we have a scenography structure that surrounds the performance resembling the rabbit hole in which Alice in Wonderland falls into.

Different options can be discussed before arrival if the performance space does not allow for the surrounding scenography structure..

Stagecraft

- The company requires:
- A ladder or lift with working height minimal 5m.
- Required amount of chairs for audience seating.
- Black linoulem dance floor covering the performance area.

Sound

The productions need a good quality full spectrum PA system with minimum two subs and two tops/tweeters. The PA must cover all seats in the auditorium. If played in a proscenium arc theatre, the production also needs 4 monitors on stage, two on each side.

The production prefers graphical equalizers for the PA and the monitors. Preferred speaker systems: D&B, L'Acoustics, Nexo or Meyer. We would like to be able to move the speakers around to get the best stereo feel. This is in regards to the piece being presented within a scenography structure. The company will supply a Macintosh computer A (and a sound card with 2 x XLR outputs) B (with mini-jack output). 2 x active DI-box or 1 x stereo active DI-box is equired" The company will run the sound, with help from the local technician.

Lighting

The company needs help rigging, focusing and running the lights, cued by the company. All listed fixtures are required from the venue. We bring our own gels.

- 2kw fresnell x 5
- 1kw fresnell x 13
- 1 kw profile x 3
- 650w profil x 24
- 1kw flood x 2

Dimmable auditorium lighting

All profiles and fresnels must be equipped with knives, barn doors and gel frames. Extra bulbs for all units must be within reach.

A supply of multicables and extention chords will be needed.

Wardrobes

- The company consists of 2 dancers and 1 production manager. The company will need 1 or 2 wardrobes with mirrors with good lighting, adjoining toilets and showers.

Food

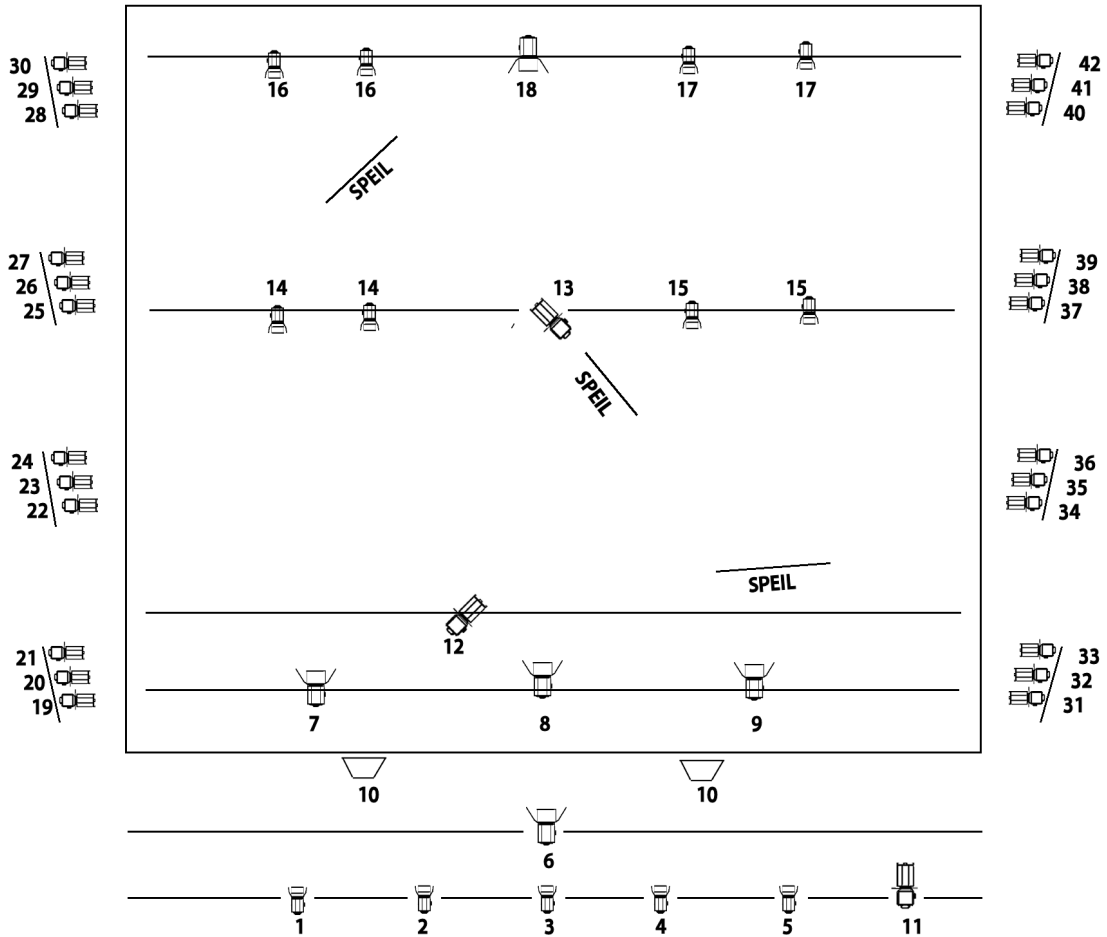
On arrival:

- Bottled water and fresh fruit for 5 people.

Load-out

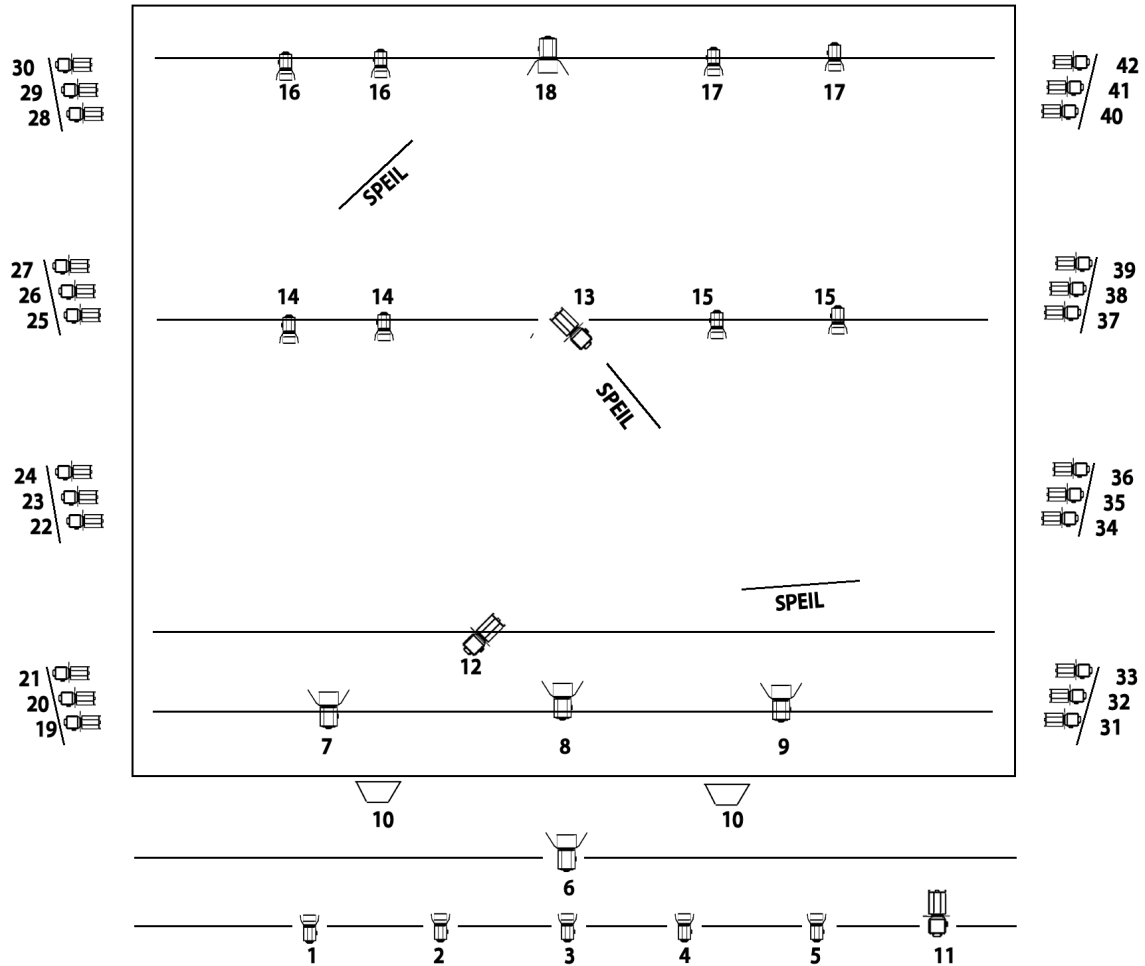
- We wish to perform load out as soon as possible after performance. Estimated load out time is 1 hour.

PANTA REI - BAK SPEILET



-  **2kW FRESNELL x 5**
-  **1kW FRESNELL x 13**
-  **1kW PROFIL x 3**
-  **650W PROFIL x 24**
-  **1kW FLOOD x 2**

PANTA REI - BAK SPEILET



- | | |
|---|--------------------------|
|  | 2kW FRESNELL x 5 |
|  | 1kW FRESNELL x 13 |
|  | 1kW PROFIL x 3 |
|  | 650W PROFIL x 24 |
|  | 1kW FLOOD x 2 |