

”I wish her well”

Technical Rider

Attached is a technical Rider covering schedule, technical and practical requirements, contacts and light plot. Changes may occur.

Contact information:

Managing director:

Pia Holden

Telephone number: + 47 920 98 897

Email: pia@pantareidanseteater.com

Schedule:

- Get in: minimum 10 hours before performance
- Set-up time: 8 hours
- Rehearsals: 2 hours before performance
- Estimated time for load out: 2 hours

Act 1: 21.11min

Intermission: 15min

Act 2: 20.30min

Arrival

- On arrival we require a clean stage and technical seating. Pipes/grid must be stripped and ready for rig. Temperature on stage must be minimum 22 degrees Celsius at all time.

Load in and parking area must be cleared. The company needs 1 parking space close to the venue.

Staff

- On arrival we require 1 sound technician and 1 light technician. Both technicians must assist company at load in and load out, have good knowledge of the technical infrastructure and be available at all times for rigging and during performance.

If prerig is possible please contact the company.

Audience seating

The ideal setting is to perform "in the round". This means that we would like to have the audience seated on all four sides of the stage. We can normally fit 160 audience members with two rows on each of the four sides. Three of the seats on the first row must be reserved for the dancers. If an "in the round" performance is not possible we can also perform with the audience on two or three sides, and even in a proscenium arch theatre.

Stage measurements

- The required performance area is 8m x 8m with side stage on each side of minimum 3m.
- Minimum proscenium/stage height is 5m.
- If stage has walls or objects with light colors or windows with transparent curtains, please cover with black molton/textile.

Set design

As part of the set design we have books hanging down from the ceiling. The company bring book on small stands that can be attached to the pipes/grid. Different options can be discussed before arrival.

Stagecraft

- The company requires:
 - A ladder or lift with working height minimal 5m.
 - Required amount of chairs for audience seating.
 - Black linoulem dance floor covering the performance area.

Sound

The productions need a good quality full spectrum PA system with minimum two subs and two tops/tweeters. The PA must cover all seats in the auditorium, on all four sides. If played in a proscenium arc theatre, the production also needs 4 monitors on stage, two on each side.

The production prefers graphical equalizers for the PA and the monitors.

Preferred speaker systems: D&B, L'Acoustics, Nexo or Meyer.

We would like to be able to move the speakers around to get the best stereo feel. This is in regards to the piece being presented at 360 degrees.

The company will supply a Macintosh computer A (and a sound card with 2 x XLR outputs) B (with mini-jack output). 2 x active DI-box or 1 x stereo active DI-box is required"

The company will run the sound, with help from the local technician.

Lighting

The company needs help rigging, focusing and running the lights, cued by the company.

All listed fixtures and minimum 27 dimmer channels are required from the venue. We bring our own gels.

- 9 x 1kW fresnels
- 3 x 1kW profiles approx 35 degrees. (ETC Source Four, Strand SL, ADB or similar).
- 3 x 1kW profiles min 50 degrees (ETC Source Four, Strand SL, ADB or similar)
- 2 x low shins, height 0,1m.
- 12 x Spectralight with 6500K tubes or: 8 x striplight and 4 x floods minimum 1250W
- 12 x PAR64 with CP62
- 1 x 5kW Fresnel or 2 x 2kW fresnels
- Dimmable auditorium lighting

All profiles and fresnels must be equipped with knives, barn doors and gel frames. Extra bulbs for all units must be within reach.

A supply of multicables and extension chords will be needed.

The light plot indicates which channels that can be doubled.

Please note that the 4 spectralight (or floods) are being hung 3m over the performance area. These units are being used in 2. Act and must be rigged during intermission.

Light plot is attached.

Wardrobes

- The company consists of 4 dancers and 1 production manager. The company will need 1 or 2 wardrobes with mirrors with good lighting, adjoining toilets and showers.

Food

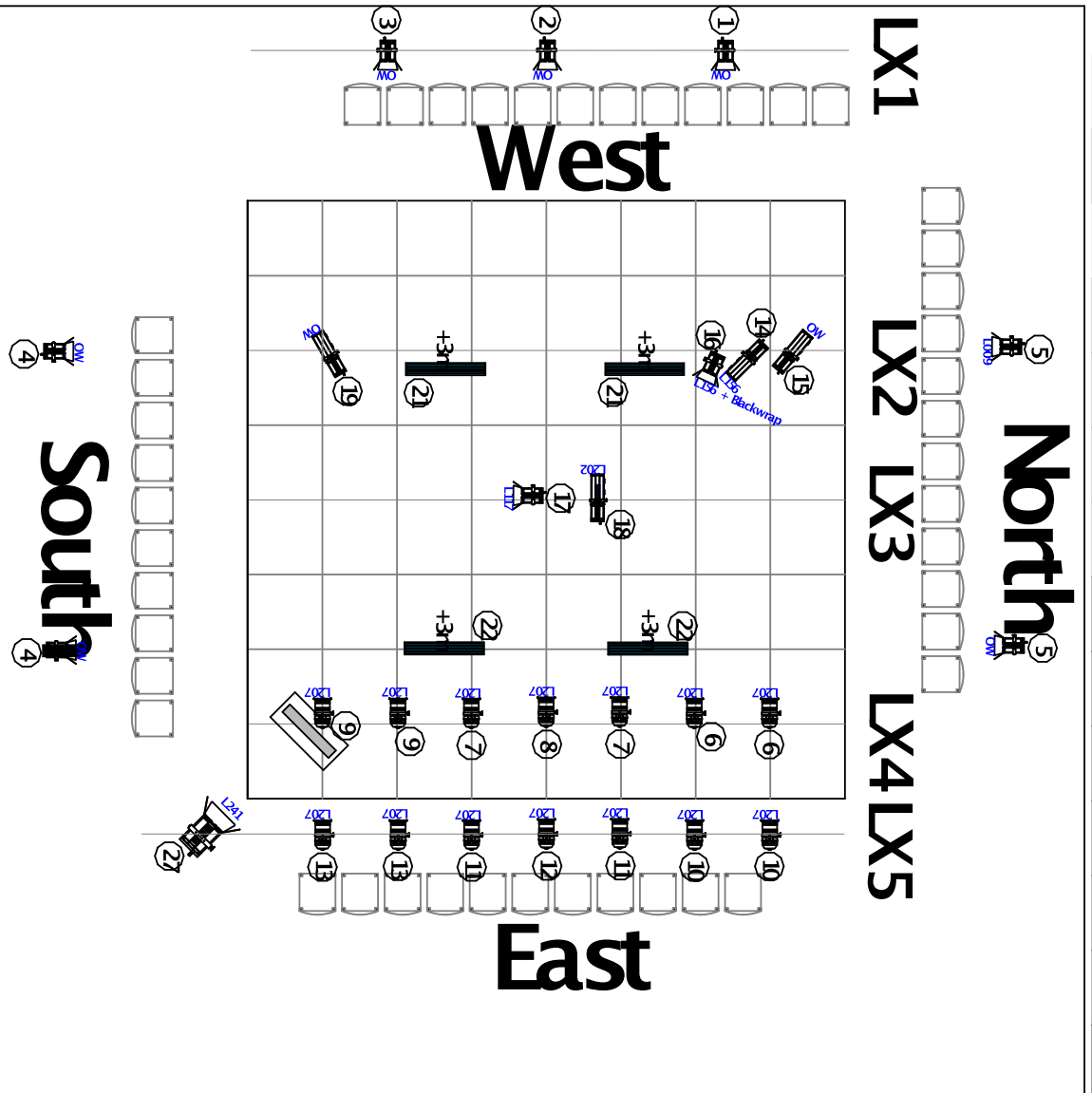
On arrival:

- Bottled water and fresh fruit for 5 people.

Load-out

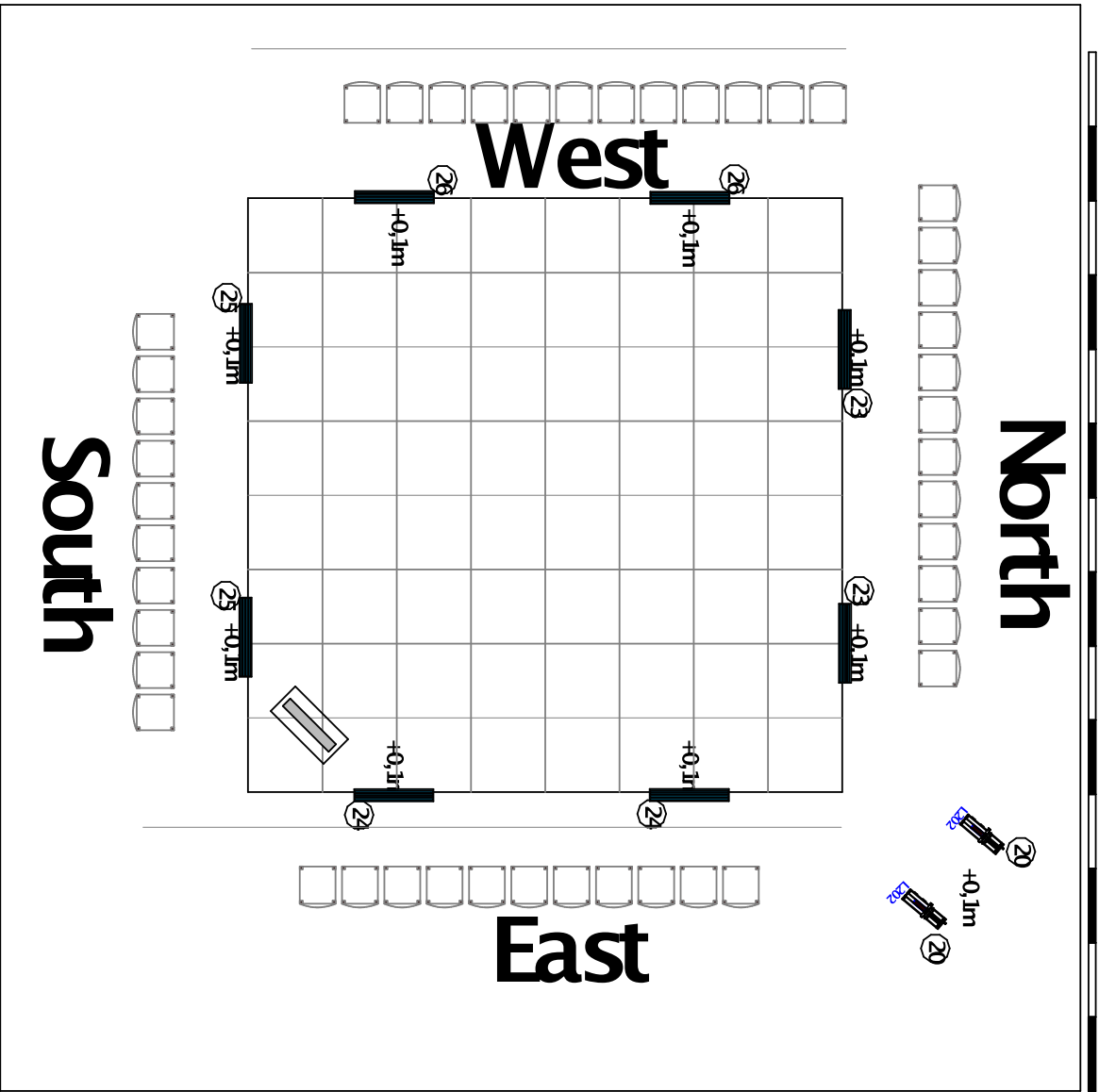
- We wish to perform load out as soon as possible after performance. Estimated load out time is 2 hours.

Ceiling Plot



Note	
Performer	Parkta Rei Danseteater
Performance	"I wish her well"
Light Design	Peter Albers
All fixtures must be complete with knives, barndoors and gel frames. Technical control seating can be situated in the most practical position for the venue.	
Key	
	9 x 1kW Fresnel
	3 x 1kW Profile min 36 Degrees
	3 x 1kW Profile min 50 Degrees
	12 x Spektralight, 4 x 6500K or 4 x 1200W Flood with L203 + L201
	8 x Striplight L203 + L201
	14 x PAR64 CP62
	1 x 5kW or 2 x 2kW
Div	2 x Slim stands Backwrap Gels as described Black linoleum floor covering 8m x 8m Please note that 4 x Spektralights are hung at 3m height

Floor Plot



Note	
Performer	Partha Rei Danseteater
Performance	"I wish her well"
Light Design	Peter Albers
All fixtures must be complete with knives, barnboors and gel frames. Technical control seating can be situated in the most practical position for the venue.	
Key	<ul style="list-style-type: none"> 9 x 1kW Fresnell 3 x 1kW Profile min 36 Degrees 3 x 1kW Profile min 50 Degrees 12 x Spectralight, 4 x 6500K or 4 x 1200W Flood with L203 + L201 8 x Striplight L203 + L201 14 x PAR64 CP62 1 x 5kW or 2 x 2kW
Div	<ul style="list-style-type: none"> 2 x Slim stands Blackwrap Gels as described Black Inoleum floor covering 8m x 8m Please note that 4 x Spectralights are hung at 3m height